



Subject:

IKARUS C42 and C42B: Rudder pedal, part number 42A14.01b and 42A14.02b

Affected:

All IKARUS C42 and C42 B.

Reason:

Due to the high forces affecting the rudder pedals, it has been decided to include their inspection in the 100 hrs inspection and the annual inspection, respectively.

Action:

Check the welded joint at the base of the pedal for cracks according to the instructions given below.

Substitution of manual page: Appendix 100 hrs inspection or annual inspection.

Compliance:

During each 100 hr inspection, but at least once a year.

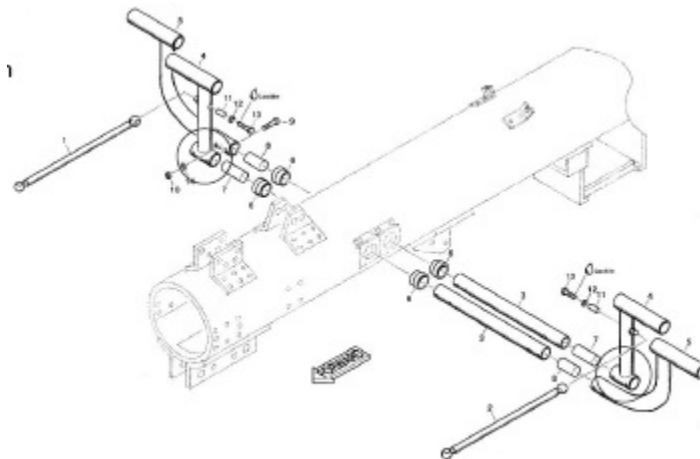
Mass and balance:

Not affected

Accomplishment instructions:

To carry out the inspection, disconnect the pedal push-rods and, after checking the front side, fold the pedals towards the seat, in order to inspect the rear. If cracks are detected, the affected pedal must be replaced before the next flight.

Check the marked areas for cracks



After carrying out the inspection, the pedal push-rods must be re-connected to the pedals and secured. The work may be carried out by a qualified person.



Leichtflugzeuge

Should the above-mentioned defect occur, the airworthiness of the aircraft is so badly affected that it may only be operated once the appropriate action has been properly undertaken.

Replacement pedals, part number 42A14.01b and 42A14.02b, used since April 2006, are available from COMCO IKARUS.